

**OPEN EVERY DAY
8 AM TO 9 PM**

The Family Grocer

All Products Limited To Stock On Hand. Retail Quantities Only Please.

EATONVILLE

EATONVILLE

FRESH QUALITY MEATS

NATURAL CENTER CUT - FRESH, WHOLE
BONELESS PORK LOIN



8 TO 9 LB. AVG.
LIMIT TWO PLEASE

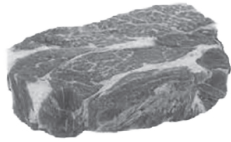
\$1.55 LB.

NATURAL - FAMILY PACK
FRESH BONELESS FRYER BREAST



\$1.77 LB. LIMIT 15 LBS. PLEASE

USDA CHOICE BEEF TOP CLOD
BONELESS POT ROAST



LIMIT 4 PLEASE

\$3.99 LB.

SMITHFIELD HOMETOWN ORIGINAL
SAUSAGE LINKS OR PATTIES 12 OZ. **\$3.99**

KRETSCHMAR OFF THE BONE
SMOKED HAM OR TURKEY 8 OZ. **\$3.99**

100% BEEF
NATHAN'S BEEF FRANKS 12 OZ. **\$4.69**

NATURAL PORK
BONELESS SIRLOIN ROAST LB. **\$2.49**

USDA CHOICE BEEF
EYE OF ROUND ROAST LB. **\$4.49**

USDA CHOICE BEEF
TOP ROUND STEAK LB. **\$4.99**

USDA CHOICE BEEF - WHOLE
BEEF TENDERLOIN LB. **\$13.98**

HICKORY SMOKED OR REG.
FARMLAND BACON 16 OZ. **\$5.49**

PRETZEL ROLL WRAPPED BEEF FRANK
NATHAN'S PRETZEL DOG 20 OZ. **\$6.99**

40/60 COUNT (2 LB. ONLY \$12.98)
COOKED & PEELED SHRIMP LB. **\$6.49**

PUGET SOUND
FRESH MANILLA CLAMS LB. **\$5.99**

SEAFOOD SUBJECT TO AVAILABILITY

ASST. VARIETY
CRAV'N PIZZA



\$3.88

28 - 32 OZ.

ASST. VARIETY
MARIE CALLENDER'S MEALS 10 - 14 OZ. **3/\$10**

JIMMY DEAN ASST. VARIETY
BREAKFAST BOWLS 7 OZ. **\$2.19**

FOOD CLUB
ONION RINGS 16 OZ. **\$2.49**

PARTY SIZE
STOUFFER'S LASAGNA 90 OZ. **\$13.99**

QUAKER ASST. VARIETY
LIFE CEREAL

2/\$5

13 OZ.



QUAKER ASST. VARIETY
CAP'N CRUNCH 11 - 12 OZ. **\$2.88**

SAN JUAN OR HAWAIIAN

FRANZ BREAD

2/\$5 24 OZ.

ASST. VARIETY
FRANZ BAGELS



6 CT. **2/\$5**

ASST. VARIETY LAUNDRY DETERGENT

XTRA



\$2.66

56 - 67 OZ.

PRICES EFFECTIVE FEB. 1 - FEB. 7, 2023

FOOD CLUB ASST. VARIETY
SEASONING MIXES

2/\$1 .75 - 1.3 OZ.



NATURE VALLEY ASST. VARIETY
GRANOLA BARS



6 CT. **2/\$4**

MARUCHAN ASST. VARIETY
6 PACK INSTANT LUNCH

2/\$5 6 - 2.25 OZ.



KRAFT ASST. VARIETY
SALAD DRESSINGS



16 OZ. **2/\$5**

ASST. VARIETY BLENDED
V-8 SPLASH

\$1.99

64 OZ.



FULL SERVICE DELI

COUNTRY LINE
SLICED CHEDDAR CHEESE

\$6.79 LB.

SLICED TO ORDER

HORMEL
HOMELAND HARD SALAMI

\$5.69 LB.

SLICED TO ORDER

RESER'S
ORIGINAL POTATO SALAD

\$1.69 LB.

PACKED TO ORDER

FARM FRESH PRODUCE

CRISP ARIZONA GROWN

GREEN LEAF LETTUCE

88¢ EA.



CALIFORNIA GROWN - DARK GREEN
BROCCOLI CROWNS



\$1.44 LB.

SWEET NEW CROP SEEDLESS
JUMBO RED GRAPES

\$1.99 LB.



FIRST OF THE SEASON
SWEET MAYAN ONIONS LB. **99¢**

EXTRA LARGE
GREEN PEPPERS EA. **99¢**

NEW CROP
SPINACH BUNCH **\$1.29**

FULL STALK - CALIFORNIA
CELERY EA. **\$1.49**

LARGE SWEET
RED PLUMS LB. **\$2.49**

CALIFORNIA GROWN
5 LB. BAG YELLOW POTATOES EA. **\$2.99**

SWEET NEW CROP
BLUEBERRIES 6 OZ. **2/\$5**

FRESH EXPRESS
SHREDDED LETTUCE 8 OZ. **\$1.99**

FOOD CLUB ASST. VARIETY
SHREDDED CHEESE

3/\$5 8 OZ.



ASST. VARIETY
ZOI GREEK YOGURT 6 OZ. **69¢**

ASST. VARIETY
ARMOUR LUNCHMAKERS 2.6 OZ. **99¢**

FOOD CLUB ORIGINAL
SOUR CREAM 16 OZ. **\$1.39**

FOOD CLUB ASST. "BRICK" VAR
CHEESE 16 OZ. **\$3.39**

BETTY CROCKER ASST. VARIETY
FROSTING 12 - 16 OZ. **2/\$3**

ASST. VARIETY
SKIPPY PEANUT BUTTER 15 - 16 OZ. **2/\$5**

ASST. VARIETY SLICED
VLASSIC PICKLES 16 OZ. **\$2.69**

ASST. VARIETY SUGAR FREE
CRYSTAL LIGHT 6 - 10 CT. **\$2.89**

FOOD CLUB
INSTANT RICE 28 OZ. **\$2.98**

IMPERIAL DELUXE OR WHOLE
MIXED NUTS OR CASHEWS 8 OZ. **\$3.89**

ORIGINAL
CHICK-FIL-A SAUCE 24 OZ. **\$3.99**

VALUABLE COUPON

CODE 6100 - PILLSBURY ASST. VARIETY



CAKE MIX

99¢

15.25 OZ.

FIRST 1, ADDITIONAL 2/3
COUPON EFFECTIVE FEB. 1 - FEB. 7, 2023
LIMIT ONE COUPON PER FAMILY PER WEEK PLEASE

VALUABLE COUPON

CODE 6101 - MERCHANT'S CRAFT ASST. VARIETY



12 PACK SODA POP

\$1.99

12 - 12 OZ.

FIRST 1, ADDITIONAL 3/11
COUPON EFFECTIVE FEB. 1 - FEB. 7, 2023
LIMIT ONE COUPON PER FAMILY PER WEEK PLEASE

VALUABLE COUPON

CODE 6102 - FOOD CLUB "BRICK"



CREAM CHEESE

99¢

8 OZ.

FIRST 1, ADDITIONAL 2/3
COUPON EFFECTIVE FEB. 1 - FEB. 7, 2023
LIMIT ONE COUPON PER FAMILY PER WEEK PLEASE