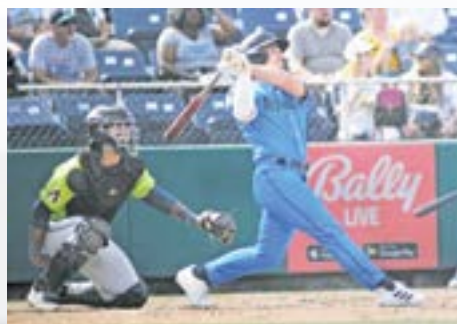


Discover...

2024

Everett



Museums offer learning, good times for everyone



Nolan Kraft, age 2, of Everett, having fun at the Imagine Children's Museum.

Imagine Children's Museum

Spend the day at Imagine Children's Museum, Washington's ultimate play and learning destination where curiosity meets discovery!

Located in downtown Everett, Imagine is the largest children's museum in the Pacific Northwest. It offers two

floors of interactive exhibits designed to promote learning for children ages 1-12 and their families, school groups and youth organizations.

At Imagine, free and guided play boost children's creativity, communication and critical thinking skills, while exposing them to key concepts in science, technology, engineering and math.

Imagine child-centered, experiential opportunities cultivate inquisitive minds and ignite a love of learning.

Memberships offer unlimited visits all year round. The museum also opens its doors for free Community Access Nights on the third Friday each month.

To deepen children's learning, field trips, camps,

classes and outreach programs make learning come alive with skilled educators.

The museum, at 1502 Wall St., is open Tuesday through Sunday from 9:00 a.m. to 4:00 p.m. (closed most Mondays).

For more information, visit ImagineCM.org or call 425-258-1006.

Future of Flight Aviation Center & Boeing Tour

With developments in aviation technology coming at an ever-quicken pace, The Boeing Company, Future of Flight Foundation, Snohomish County Public Facilities District and the Snohomish County Airport (Paine Field) sought to create a unique interpretive center to help visitors look into the future of commercial aviation. Discover North America's ONLY publicly available commercial jet assembly plant tour: the Boeing Tour offers a remarkable opportunity to see both commercial jet production today and the direction aviation is headed in the future.

The \$23 million Future of Flight project features hands-on exhibits, videos, graphics and interactive stations to involve and appeal to the whole family. For example, you can digitally design and test your own jet and take an

exhilarating ride aboard the multi-passenger XJ5 Flight Simulator, at mind-jarring, supersonic speeds!

The museum is located at 8415 Paine Field Blvd. For more information call 425-438-8100 or visit www.futureofflight.org.



Everett Farmers Market in the heart of downtown

The Everett Farmers Market opens the 2024 Season in the "Heart of Downtown" with Get Ready Markets on February 25, March 17, and April 14.

Market organizers are ramping up for their Grand Opening on Mother's Day, May 12. The Everett Farmers Market Season runs May 12 through October 27, with a Harvest & Holiday Market November 24 in the regular location.

You will find winter produce, value-added artisanal goods, a variety of eclectic artists, and delicious hot food on this first of twenty-nine Sundays in 2024! Come and enjoy a Sunday afternoon 10:30 to 3:00 p.m. in the Heart of Downtown where Teh Market plans to "Cultivate Community" on Wetmore between Hewitt and Pacific Avenues. The Market offers ample street parking with



ADA spaces close by. The address is 2930 Wetmore. See you there!

Enjoy Everett's beautiful Waterfront

Here are a few ideas for visitors and residents alike to enjoy Everett's waterfront:

• Boxcar Park

Boxcar Park butts right up to the water and is a perfect spot to enjoy a picnic, throw a frisbee with a friend or watch the sunset. Local Picnic Tip: The Sno-Isle Natural Foods Co-Op is a great place to load up on snacks.

• Howarth Park

Head up the trail through the forest and over the railroad tracks to a spectacular beach with killer views. The park also has trails, playgrounds, picnic shelters, and an abundance of water views! The pedestrian bridge gives you easy access to the beach.

• Run, Walk, Bike

The Everett waterfront has a four-mile paved trail that'll take you past some pretty

selfie-worthy scenery.

• Music at the Marina

On Thursday nights during the summer, the docks at the Port of Everett Marina transform into a huge outdoor dance floor. It's free to watch the music and beer and wine is available. Bring cash and your dancing shoes. A jacket is a good idea, too, for when the sun goes down.

The Puget Sound series is Fridays in August at the Guest Dock near Hotel Indigo.

• Fishing Charters

The Pacific Northwest has an abundance of salmon and crab – not to mention a picturesque and rugged coast that is especially nice to see by boat. If you can, check out one of Everett's fishing charter companies.

• Kiteboarding

Jetty Island is a top

destination for kiteboarding and if you're feeling adventurous, you can take a class and learn how. Not feeling gnarly? No prob, it's fun to watch from the beach.

• Jetty Island Days

Everett's sandy island of wonder is only accessible by a free ferry (unless you have a boat/raft/scuba tank). The island boasts two miles of sandy beach and the water is shallow and warm (by PNW standards). Jetty Island Days run between July and Sept. 3. Fun fact: Jetty Island is a top destination for Kite Boarding.

• Sail in Cinema

Catch free outdoor movies on select Friday evenings during the summer at Boxcar Park. Bring a blanket, junk food and enjoy the show. You can also "sail-in" and watch the movies aboard your boat.

• Food Truck Fridays

Feast on street food, lounge in the sunshine, and take in the views of the Olympic mountains. Every Friday from May-September, you'll find a host of food trucks at the Port of Everett's South Marina.

• Grand Avenue Park Bridge

This new pedestrian bridge connects the north end of Grand Avenue Park to the Port of Everett waterfront.

• Alverson Pedestrian Crossing

The crosswalk at Alverson Drive offers pedestrians a safe and easy way to access



Kiteboarding at Jetty Island

the waterfront via the Mill Town Trail.

Important Phone Numbers

Police Dept:
425-257-8400

Fire Dept:
425-257-8100

City of Everett:
425-257-8700

Animal Control:
425-388-3440

PUD:
425-783-1000

Animal Shelter:
425-257-6000

Health District:
425-339-5200

Everett Transit:
425-257-7777

Community Transit:
425-353-7433

Parks & Recreation:
425-257-8300

Senior Center:
425-257-8780

Rotary Club of Everett:
425-259-9141

Library (Hoyt Ave.):
425-257-8000

Library (Evergreen Way):
425-257-8250

Garbage and Recycling:
425-257-7205

Building Permits:
425-257-8810

Everett School District
425-385-4000

Sound Transit
888-889-6368

Poison Control
800-222-1222

Police Non-Emergency
425-407-3970

Port of Everett
425-259-3164

Paine Field Airport
425-388-5125

Seattle Paine Field Passenger Terminal
800-252-7522

Providence Hospital
425-261-2000

Housing Authority
425-374-7762



Everett Arts and Entertainment

The performing arts in Everett – from concerts to acting and dancing – are amazing with top-notch local and internationally known performers.

Everett also offers breathtaking pieces of art – from sculptures to glass-blowing to carvings and paintings – there's beauty and wonder for everyone!

• Everett Philharmonic

The Everett Philharmonic serves the greater Everett community with symphonic performances of the highest quality, delighting every concert-goer from the youthful novice to the experienced aficionado. Concert venues include the Everett Civic Auditorium and the Everett First Presbyterian Church. For more information visit www.everettphil.org.

• Historic Everett Theatre

The Historic Everett Theatre, built in 1901, is the lone survivor of Everett's theatre heyday. At one time, 16 theatres graced the city. The Historic Everett Theatre, the most elaborate of those is open to the public and offers an amazing variety of entertainment. To view the many upcoming concerts and events, visit www.historiceveretttheatre.org.

2911 Colby Ave. 425-258-6766

• Village Theatre and KIDSTAGE

Producing entertaining, quality productions since 1979, Village Theatre has grown into one of the region's

best-attended professional theatres and is nationally recognized.

Village Theatre KIDSTAGE offers acting, singing and dancing classes, as well as musical theatre productions, for students pre-k through age 20. For more information on Village Theatre call 425-257-8600; KIDS STAGE call 360-740-5035 or visit www.villagetheatre.org/everett.

• The Schack Art Center

Inside the Schack Art Center, you find exhibit galleries with diverse artwork from locally and internationally known professional artists, as well as emerging young talents.

The main gallery also provides a first-class view into the world of glassblowing.

Schack Art Center has four production studios that accommodate a wide variety of mediums.

The Annual Fresh Paint, a festival of artists at work, is tentatively scheduled for Aug. 19-20 at Hoyt Ave & Wall St. in downtown Everett. Over 100 booths, live entertainment, interactive art activities, glass blowing and more!

The Schack Art Center is located at 2921 Hoyt Ave. For more information visit www.schack.org

• Everett Performing Arts Center

The Everett Performing Arts Center presents an exciting array of professional performances by world-renowned artists and companies.

Enjoy these spectacular performances in an intimate setting at the Everett Performing Arts Center, located at 2710 Wetmore Ave. in downtown Everett.

For more information call 425-257-8600.

• Everett Chorale

For over 50 years, the Everett Chorale has performed a wide variety of quality choral music for the enrichment and enjoyment of Snohomish County. Membership is open to all interested singers with previous choral singing experience.

Tickets can be purchased at the Everett Performing Arts Center 2710 Wetmore Ave. or online at www.everettchorale.org. 425-257-8600.

Explore Everett Parks

Whether you prefer saltwater, the brackish water of an estuary, a meandering river or a deep lake, Everett Parks has beaches, views and boat launches to get you closer to the water. There are also many parks to visit with your children for a great family outing. For more information on any of the parks that Everett Parks and Recreation offers, call 425-257-8300. A complete list of parks can be found at www.everettwa.gov



Rotary Park offers access to the Snohomish river system for small river boats.

- **Grand Avenue Park**
1800 Grand Ave.
- **Green Lantern Park**
1822 Silver Lake Rd.
- **Hannabrook Park**
5815 Brookridge Blvd.
- **Harborview Park**
1621 Mukilteo Blvd.
- **Hauge Homestead Park**
1819 121st St. SE
- **Howarth Park**
1127 Olympic Blvd.
- **Interurban Park**
Madison & Commercial
- **JJ Hill Park**
Hewitt Ave. & Broadway
- **Jetty Island**
- **Johnston Kelly Park**
49th St. SW & Forest Dr.
- **Judd & Black Park**
Hewitt Ave & Maple St.
- **Kasch Memorial Park**
8811 Airport Road
- **Kiwanis Park**
36th & Rockefeller
- **Langus Riverfront Park**
400 Smith Island Rd.
- **Lions Park**
7530 Cascade Dr.
- **Loganberry Lane Park**
18th Ave. West
- **10th Street Marina Park**
10th St. & W. Marine View Dr.
- **American Legion Memorial Park**
145 Alverson Blvd.
- **Bayside Park**
2200 Grand Ave.
- **Cascade View Park**
88th St. & 7th St.
- **Century Park**
E. Berkshire Drive
- **Clark Park**
2400 Lombard Ave.
- **Deer Park**
1300-55th St. SW
- **Doyle Park**
3420 Grand Ave.
- **Drew Nielsen Park**
13th St. & Colby Ave.
- **Edgewater Park**
3731 Mukilteo Blvd.
- **Elm Street Park**
Olympic Blvd. & View Ridge Dr.
- **Emma Yule Park**
4730 Colby Ave.
- **Forest Park**
802 E. Mukilteo Blvd.
- **Garfield Park**
2300 Walnut St.

- **Lowell Riverfront Park**
Lowell-Snohomish River Rd.
- **Lowell Park**
4605 S. 3rd Ave.
- **Madison-Morgan Park**
518 Madison Street
- **Phil Johnson Ball Fields**
400 W. Sievers-Duecy Blvd.
- **Riverside Park**
Everett Ave & E. Grand Ave.
- **Rotary Park**
3505 Lowell-Snohomish River Rd.
- **Rucker Hill Park**
621 Laurel Drive
- **Sen. H.M. Jackson Park**
1700 State St.
- **South Everett Forest Preserve**
1017-109th St. SE
- **Summit Park**
Summit Avenue
- **Thornton A. Sullivan Park (Silver Lake)**
11405 Silver Lake Rd.
- **Viola Oursler Park**
721 E. Mrine View Drive
- **Walter E. Hall Park**
1226 SW Casino Road
- **Wetmore Theatre Plaza**
2710 Wetmore Ave.
- **Wiggums Hollow Park**
2808 10th St.

Everett Art Walks

Enjoy an inspiring evening of the arts in Everett, as local businesses come together to celebrate "the arts" on the third Thursday of each month from 5-9 p.m. The Art Walks showcase great visual, literary and performance artists from Everett and beyond!

For more information visit www.everettartwalk.org

FREE Kids Fishing Event

Expert fishing guides help kids reel in the excitement at the FREE event for ages 4-14 Saturday, May 13 from 8 a.m. to 1 p.m. at Thornton A. Sullivan Park at Silver Lake (11405 W. Silver Lake Road in Everett).

Bring your own rod, reel and tackle. Some equipment may be available to borrow. Everett Steelhead and Salmon Club will also have free youth fishing days May 4 at Jennings Park in Marysville and May 18 at Twin Lakes.

Upcoming Events 2024

• 4th of July Celebration

The Grand Parade starts at 11 a.m. in Downtown Everett. Festivities at Legion Park, 145 Alverson Blvd., kick off at 3 p.m. with live music, food trucks, beer garden and more. The spectacular Thunder on the Bay Fireworks Show will light up the sky at 10 p.m. For more information visit

www.everett4thofjuly.org

• Sorticulture June 7-9

This three-day outdoor event is the premier festival for garden art, local plants and flowers, handmade outdoor products and outdoor living in the Pacific Northwest. Local celebrity Cisco Morris is scheduled for 1 p.m. on June 8. Legion Park, 145 Alverson Blvd.

Discover Everett

Publisher:
Becky Reed

Representatives:
Michelle Ewing
Becky Reed

Pacific Publishing Tribune
P.O. Box 499, Snohomish, WA 98291-0499
360-568-4121
or 425-258-9396

Supplement to the Tribune Newspapers

If it has a motor, and you drive it... We can help you out!

Julie's Licensing Service

VEHICLE • VESSEL • TITLE TRANSFERS
RENEWALS • TONNAGE • PERMITS • NOTARY

425-252-3518

Hours: Mon.-Fri. 10:00 am - 6:00 pm
NEW ADDRESS: 1331 Broadway • Everett, WA 98201

the MailRoom

- ☑ 24-Hour Mailboxes
- ☑ Packaging/Shipping Services

425.252.8789 • 3616 Colby Ave, Everett
MailRoomEverett@aol.com

Discover Everett Sports

Silvertips - there's nothing like a hockey game

The Everett Silvertips are a member of the Western Hockey League. The games are held at the Angel of the Winds arena, 2000 Hewitt Ave.

There are many contests and promotions for spectators at the home games. Visit everettsilvertips.com for tickets and a complete list of contests. Have fun and good luck!

Silvertips Remaining Home Games:

- March 1: Moose Jaw Warriors (The Great Small Dog Race)
- March 2: Regina Pats (Navy



Kaitlyn Price photo

- Night)
- March 8: Victoria Royals (Clear Bag Giveaway)
- March 15: Kelowna Rockets (Hockey Happy Hour)
- March 23: Wenatchee Wild (Trading Card Set Giveaway)
- March 24: Tri City Americans (Team Poster Giveaway)

Enjoy an AquaSox game at Everett Funko Field

The Everett AquaSox (Seattle Mariner's HighA affiliate), play home games at Funko Field at Everett Memorial Stadium, 3900 Broadway Avenue.

The Everett AquaSox prides itself on providing a family-friendly atmosphere, and loves to hear how much fun kids have when they get to run the bases. After every Sunday game, kids are invited by Webby, the AquaSox mascot, to sprint around the infield.

Also every Friday home game fans will receive a fantastic give away item

compliments of Funko.

Fireworks Shows will be May 4, (Star Wars Night) May 25, June 8 (MARVEL Defenders of the Diamond), June 22 (Pink at the Park), June 29, July 4, July 20 (UofW-Bothell Alumni Night), Aug. 3 (Frogstock), Aug. 17, Sept. 7.

For more information visit www.aquasox.com

Aquasox Home Game Schedule:

- April 9-14: Eugene
- April 30-May 5: Hillsboro
- May 14-19: Eugene
- May 21-26: Tri City
- June 4-9: Vancouver



- June 18-23: Hillsboro
- June 25-30: Spokane
- July 4-6: Vancouver
- July 19-21: Hillsboro
- July 30-Aug. 4: Eugene
- Aug. 13-18: Tri City
- Sept. 2-8: Spokane (No game Tuesday, Sept. 3)

Everett boasts two beautiful golf courses

Everett's public golf courses, Legion Memorial and Walter Hall are maintained by the City of Everett and managed by Premier Golf Center, LLC. The two beautiful golf courses are both set in a forest setting and have amazing views of the mountain ranges.

Each 18 Hole course offers golf instructions through PGA Teaching Staff both for

individual and group lessons. If you are new to the sport or would like to work on your short game, there is a program that will benefit you.

If this season brings company outings, charity events, family gatherings, leave the hassle of planning and organizing to the Tournament Director. The professional staff will work closely to plan

and manage the golf outing of which you have always dreamed - on budget, on time, and enjoyable for all.

The pro shops offer a great selection and competitive prices on golf equipment, apparel and accessories. Sales associates include certified club fitting experts, committed to matching the right equipment to your

swing.

Visit Everett's Golf Courses, to play, to learn, to practice, to enjoy!

Legion Memorial 144 W. Marine View Dr. 425-259-4653

A Pacific Northwest tradition since 1933, Legion Memorial is a favorite for golfers of all skill levels.

Players are treated to wonderfully manicured course conditions, personal customer service, and a player-friendly design that features five sets of tees ranging 6,900 yards at the championship tees, to 4,805 yards at the forward tees.

Walter Hall Golf Course 1226 W. Casino Rd

425-353-4653

A favorite of Pacific Northwest golfers since 1972, Walter Hall golfers of all skill are treated to wonderfully manicured course conditions, personal customer service, and a player-friendly design that features four sets of tees ranging 6,433 yards at the back tees, to 5,219 yards at the forward tees.

Everett Jets Semi-Pro Soccer calls Everett home!

The Everett Jets Semi-Pro Soccer team is embarking upon their 4th season with the Evergreen Premier League of Washington (EPLWA). They remain the only team in the league to call Snohomish County home. Everett competes against other top teams from across the state like Bellingham United, Spokane Shadow, Vancouver Victory, and Yakima United.

The Jets have made it to the playoffs every year since their inception. In each of the last 2 seasons, they finished 2nd

in their division and made it to the Semi-Finals.

The Everett Jets are owned and operated by Hawk and Marco Mummey. "We had been planning, campaigning, and working with the community on this for years," said Marco. "We know this is a giant step forward for the Everett soccer community. Our vision for this club from the onset was always to help bring the community closer through the beautiful game."

The move into Everett brings statewide, elite amateur soccer

back to town and bridges a big gap for the Evergreen Premier League, which had been absent from soccer-rich Snohomish County. It also gives Bellingham United their closest geographical rival and expands the league's footprint.

"In order to create Home Team Heroes you need roots in your community. That is what Marco and Hawk Mummey bring to the EPLWA with their Everett Jets Football Club," said EPLWA President, Tim Busch.

"Our goal, as it is every year, is to bring a championship home to Everett," said Hawk Mummey.

"The EPLWA has been a major player in helping develop local players and allowing another platform for them to showcase their skills," continued Marco. "We aim to bring that same model to the Everett soccer community. At the same time, we are striving to build a game day experience that is fun, exciting, and

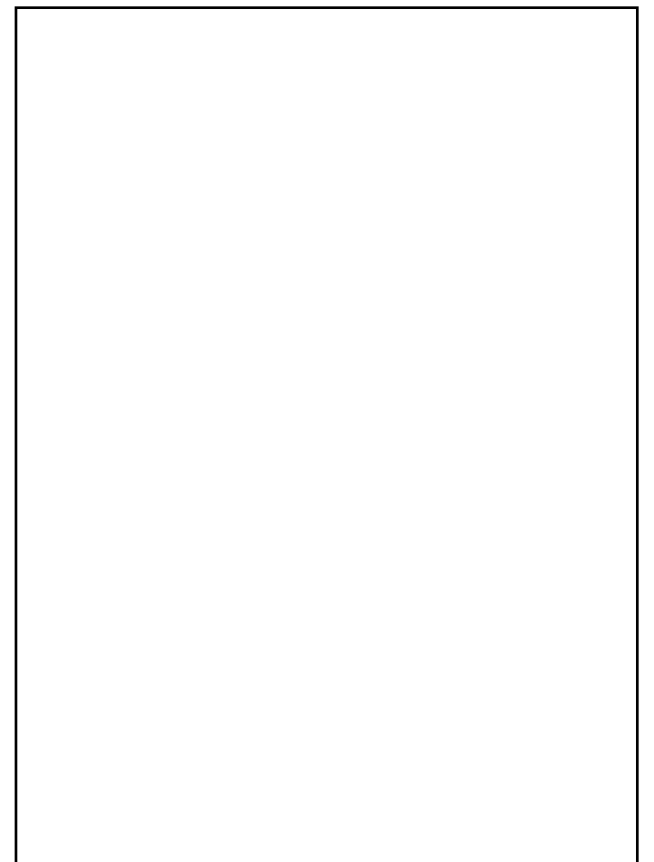
family-friendly...one that the community can rally behind. Joining the EPLWA allows us to accomplish both our goals to develop local talent and unite the strong Everett soccer community."

Family-friendly pricing is only \$12 for adults (ages 13 and up) and \$6 for youth (ages 5-12). Season tickets are \$65 per adult and \$35 per youth. Children 4 and under are free of charge.

For more information visit www.everettjetsfc.com.

About the Evergreen Premier League:

The Evergreen Premier League is an elite adult men's amateur soccer league for college and post-college age players to feature their skills throughout the state. The league's mission is to cultivate "football club" culture while providing opportunities for coaches, owners, supporters, players, and towns to enjoy the sport and all of the community-building it can bring.



Port of Everett creates jobs, economic development opportunities

As the fastest-growing county in the state, Snohomish County has proven to be a place where both business and community thrive. A big piece of the economic growth and opportunity found here today and into the future is directly tied to the efforts of Snohomish County's only international seaport AND transforming destination waterfront – delivered by the Port of Everett.

Over the years, the Port of Everett has focused on sustainable operation of its three lines of business — international shipping terminals, marina facilities and real estate development — while delivering a robust capital program that provides steady, strategic investment in infrastructure to support jobs and economic growth in the Port District and throughout Snohomish County.

The Port has prioritized bold maritime investments at its working waterfront to be able to efficiently move more than \$21-30 billion in annual commerce value through the area, keep our region competitive, support the County's top industries and employers – from aerospace to military and beyond – create new business opportunities and support thousands of close-to-home, family-wage jobs.

Since 2012, the Port has invested more than \$150 million to modernize its

seaport facilities and add sustainable features to help green the supply chain, with the largest of investments being the recently completed \$57 million South Terminal modernization to support the new 777X and other high-value cargos, and the \$40 million Norton Terminal development that included the final upland cleanup of the last mill site to serve the Everett waterfront and added 40 acres of additional capacity to the national freight network to support key industries.

Together, these projects create major economic benefit for our region, generating 2,300 additional jobs, \$180 million in personal income, \$46 million in local purchases, \$14.5 million in state and local taxes, and \$46.5 million in federal taxes – not to mention, providing a major asset for businesses and employers looking to site their businesses here.

Significant investment has also been made by the Port at the recreational waterfront, helping mark Snohomish County as a true destination. The Port has focused its capital resources on upgrading and maintaining its marina facilities at the state's largest recreational boating hub and forging ahead on a new mixed-use destination at Waterfront Place, adding new housing, hospitality, retail, commercial

and public spaces.

The \$1 billion+ in public/private investment is adding 1.5 million+ square feet of new business opportunity and attracting new companies to the area, like the first-ever Washington-based Maritime Institute, as well as adding new jobs, public access, and quality-of-life enhancements for locals and visitors to enjoy.

The Port has invested more than \$26 million in new waterfront public access projects here since 2006, with millions more underway now or in the pipeline. Nearly half of all Port property is dedicated to public access, including Jetty Island, and the Port continues to look at ways to enhance appropriate shoreline access around the waterfront.

Further, the Port takes a lead role in environmental sustainability. Of note, the Port has taken an aggressive approach to remediating historic contamination from legacy mill activity at the Everett waterfront, including cleanup of nearly 250 acres to facilitate redevelopment for new job hubs, including Riverside Business Park and the Baywood Business Park, as well as for critical trade facilities (former Kimberly-Clark mill site into Norton Terminal) and community mixed-use (65-acre cleanup at Waterfront Place to facilitate development).

The Port recently completed

its Blue Heron Slough project adding 353 acres of critical salmon habitat in the Snohomish River. To that end, the Port is also embarking on implementation of a climate action strategy to support a sustainable future, including by working expeditiously to help green the supply chain by supporting electrification at its shipping facilities.

In addition, the Port is supporting economic growth and opportunity in Mukilteo, focusing on the highly anticipated waterfront revisioning and development program there.

The Port has also been working in partnership with the cities of Arlington and Marysville to support marketing of the Cascade Industrial Center — a 4,000-acre innovation corridor bringing new light industrial and manufacturing companies north with a nexus and need for trade and freight facilities. This project brings jobs closer to home for area residents to the tune of an estimated 25,000 new jobs by 2040.

The Port continues to advocate at the state level for improved transportation to maintain efficient access for freight and people for all of these important projects, while also supporting sustainable growth that keeps quality of life for residents in mind.

And, as the most trade-



Photo courtesy of the Port of Everett

Sunset boat watching at Boxcar Park.

dependent county in the state with about 60% of jobs in Snohomish County tied to trade, the Port is always looking ahead to our youth and the next generation of maritime jobs. The Port has been focused on workforce

development, engaging with students and educators from elementary to high school levels and beyond via community and technical colleges to facilitate programs that illuminate pathways to maritime jobs.

ERICKSON'S



JEWELER'S
Since 1993
31 years in business

**SPECIALIZING IN
CUSTOM DESIGN**



Appointments Available
425-252-7464
2625 COLBY AVE.
EVERETT

Soaring Beyond the Skies: Paine Field's thriving aviation hub and passenger terminal



The Commercial Passenger Terminal at Seattle Paine Field offers travelers in Snohomish County close, convenient access to air travel. The terminal is currently serviced by Alaska Airlines, who offers direct routes to Anchorage, Honolulu, Las Vegas, Los Angeles, Orange County, Phoenix, San Diego and San Francisco, with seasonal service to Tucson and Palm Springs.

The terminal provides passengers with a variety of upscale amenities, including valet parking, concierge services, locally sourced dining options, lounge-style seating with power at every seat, and high-speed internet. The tranquil environment is accentuated by fireplaces, exposed wood, fresh flowers, glass jetways, and floor-to-ceiling windows with views of the Olympic Mountains.

Since the commencement of commercial service in March of 2019, the terminal has serviced more than 2.5 million passengers and has received accolades worldwide for its unparalleled customer service, state-of-the-art facility, and the innovative public-private partnership with

Snohomish County. For more information about commercial service at PAE, visit the terminal website at www.flypaine.com.

Nestled in the heart of our region, Paine Field quietly shapes the economic landscape with an annual impact of around \$60 billion, thanks to the steady hum of aerospace companies in its vicinity. Established in 1936, Paine Field has played a pivotal role in the regional, national, and global aviation scene.

Paine Field, or PAE, is more than just two runways: it's a cornerstone for Boeing's widebody aircraft manufacturing, testing, and delivery. From the elegant 787, to the workhorse 767 and its military counterpart, the KC-46, to the iconic 747, each aircraft has left an indelible mark on the skies. The production line for the 737 MAX, scheduled for late 2024 or early 2025, will continue this legacy.

Yet, PAE is more than a workplace; it's a destination. Beyond the production buzz, PAE offers a glimpse into aviation history through the Flying Heritage & Combat Armor Museum. PAE embraces innovation

and exploration through the captivating experiences offered at the Boeing Future of Flight Aviation Center and Everett Factory Tour. This dynamic duo not only provides a window into the cutting-edge present of aviation but also offers a sneak peek into the exciting possibilities that lie ahead in the ever-evolving world of flight. PAE also hosts a vibrant general aviation community, proudly holding the top spot in Washington state and securing the 11th position nationwide. With more than 550 based general aviation aircraft, it stands as a testament to the airfield's role as a hub for enthusiasts and professionals alike.

As commercial air service graces Paine Field, it becomes more than a logistical hub; it's a gateway to adventure, a bridge connecting our region to the world. For the intrepid traveler, it's a promise of exploration; for investors, a golden ticket to a region buzzing with possibilities.

Snohomish County owns Paine Field, Propeller Airports operates the terminal.

The Seattle Paine Field Passenger Terminal is located at 3300 100th Street SW, Everett, WA 98204.

Naval Station Everett

Naval Station Everett (NSE) is one of four major U.S. Navy Installations in the Navy Region Northwest located around the waters of Puget Sound. NSE is a valuable naval asset, being one of two Navy-owned deep water ports on the West Coast of the continental United States.

NSE supports national defense as a homeport to a variety of surface ships that include seven U.S. Navy destroyers: USS Momsen, USS Gridley, USS Sampson, USS Kidd, USS John Paul Jones, USS John S McCain, and USS McCampbell. The deployable command staffs of Carrier Strike Group 11 and Destroyer Squadron 9 have offices on base. A U.S. Coast Guard buoy-tender and coastal patrol boat are stationed here. Occasionally, Military Sealift Command supply vessels have also used the Navy port.

Since establishment in 1994, the base has carried out its mission with strong community support. NSE provides a secure home base for ships at the pier, active duty and reserve sailors, and their families. The base



USS Samson

and its tenant commands provide critical functions such as port and tug operations, ship maintenance, military training, base security, emergency response, environmental stewardship, and public works. Most importantly, quality of life and family programs are there to assist sailors and families so they can be ready for deployment and stay resilient to the challenges of military life.

NSE's Morale, Welfare, and Recreation program encourages military members and their families to be engaged in their community. MWR offers opportunities for trips and tours across the state, learning outdoor skills such as

backpacking and kayaking, exploring parks, and many other activities. Check for upcoming events of the season at NavyLifePNW.com.

Locally, NSE contributes more than \$340 million annually in economic impact through payroll, goods, services, and contracts. The base provides approximately 4,000 jobs that include direct employment of federal civilian, active duty military, and reserve military personnel.

For base news and updates follow [Facebook.com/NavalStationEverett](https://www.facebook.com/NavalStationEverett).

For general information about Naval Station Everett visit CNRNW.CNIC.Navy.mil/Installations/NS-Everett.

Jetty Island fun

The summer long Jetty Island Days runs July 5 through September 3 with free programs and activities for the entire family.

Jetty Island, located 1/4 mile off of the Everett waterfront, is a man-made island with a two mile long sandy beach and shallow warm water that is a kite boarder's paradise.

The two miles of continuous sandy beach is unique to the area and is ideal for sunbathing,

picnicking and observing nature and other outdoor activities.

The Jetty ferry departs from the 10th Street Boat Launch and Marine Park Wednesday-Sunday throughout the summer.

New to the Jetty Island program is an online reservation system for island-goers to secure their spot on the ferry in advance.

Make your reservations starting in June for the 2023 summer season. Previously

ferry transport was available on a first come, first-served basis, with no assurance of catching a ride.

The cost for providing transportation of the ferry will be partially offset by a nominal passenger fee of \$3 per person, children age two and under ride for free. To make reservations and jetty tips and rules, visit www.visiteverett.com/Jetty

If you don't have internet access, please call 425-257-8300 for more information.

Funko fun in Everett

You can't miss the Funko building on the corner of California and Wetmore in downtown Everett. It's the building with the giant toys on it and the lit-up sign.

You'll want to tour the retail area on the ground floor. It's equal parts Willy Wonka's Chocolate Factory/Disneyland-without-the-rides and retail spot – there are giant replicas of Funko Pops everywhere.

Pops are the main toy that Funko produces. They're highly collectible bobble-head-looking vinyl action figures. Funko Pops are available for most any television or movie franchise



that you can imagine.

Kids love the Funko flagship store for the larger-than-life Hagrid from Harry Potter, Frozen's Elsa, and Luke Skywalker. It makes for a great photo op, even if you're an adult.

The retail area also has a place where you can build

your own Funko Pop with a Funko artist.

The Funko building is right in the heart of Downtown Everett at 2802 Wetmore Ave., so after your tour you can walk within a two block radius to get great coffee or a bite to eat.

Getting around town

The Everett Station is a multi-modal, multi-use building that serves as a transportation hub, hire education and career development center and a gathering place for community events.

Amtrak, Greyhound, Everett Transit, Sound Transit and

Community Transit all provide service from the Everett Station.

Sound Transit's bus and train service is great for commuters. This service can also take you to special events in Seattle.

Meeting and rental facilities are available by calling 425-

257-6707. The Everett Station is located at 3201 Smith Avenue.

For Everett Transit schedule and route information, call 425-259-8803, and for information on connection to Community Transit call 425-353-RIDE or 800-562-1375.

